

# LBA ELITE CLASSIC

West Coast • High School • Extravaganza

By Ray Mayes, Womanhood Grassroots  
Basketball Report January 11, 2009

*The LBA Elite Classic one day high school team matchup featured some of top programs and players on the west coast. The event was held Saturday January 10, 2009 at Mount Miguel High School, San Diego California*

*Bishop Gorman HS., Las Vegas NV. • Sierra Canyon HS., Chatsworth CA. • Ayala HS., Chino Hills CA.*

*Colony HS. Ontario, CA . • San Diego HS. San Diego CA. • Eastlake HS., Chula Vista CA.*

*Our Lady of Peace Academy, San Diego CA. • Mount Miguel HS., Spring Valley CA.*

*Sierra Canyon HS., Chatsworth CA. • Laguna Hills HS., Laguna Hills CA.*

Colony HS. ( Ontario CA.) 9-1 (Coach Edward Taylor) vs. West Hills HS. (Santee CA.) 12-2 (Coach Ryan Kinser)

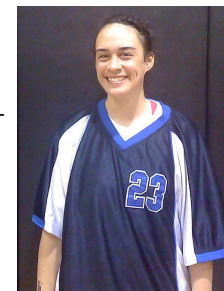


Camille Buckley- 2009

## GAME – I :

West Hills executed their offense in the first half to perfection . Marilyn Naderhoff, 2010 (2G) led the way for West Hills with 10 first half points (17 for the game) along with Kim Clark (10 points) a strong wing with good size and deep 3 point range. Colony's Camille Buckley 6-2 PF ( LMU Signee) kept her cold perimeter shooting team in the game with an array of post moves and powerful offensive rebound put-backs. Half time score was 27-25 West Hills. Colony made adjustments in the second half with full and half court pressure that resulted in turnovers and easy layups. Jazmyne White 6-0 PF Colony, took the game over with her defensive pressure and ability to put the ball on the floor slashing to the cup creating several (and 1) opportunities. West Hills lead the entire way with mid range perimeter shooting knocking down several shots from beyond the arc along with the help of Sherika Miller 5-9 G with a tremendous upside finished with 10 points. West Hills seemed to tire in the 4<sup>th</sup> and gave the lead away with 23 seconds left in the game eventually losing behind Jazmyne White's (Colony) 18 second half points and 24 for the game.

**Colony 51-50**



Marilyn Narderhoff-2010

Sierra Canyon HS.(Chatsworth CA.) 12-2 (Coach T.J. Knox) vs. San Diego HS. (San Diego CA.) 11-5 (Coach Lonnie Jones)



Charde Houston, Minnesota Lynx (WNBA) (San Diego HS. Alumni) - CA. State All Time Leading Scorer Ray Mayes, WGR - Report (FBC Basketball)

**GAME – II :** San Diego HS. dominated the 1<sup>st</sup> quarter with the inside out play and physical post presence on the glass with 6-2 Freshman Amie Callaway (12 points) . San Diego guards seemed a step quicker but Sierra Canyon ultimately won the hustle game on both ends, in up and down game that was pretty erratic early. The well coached Sierra Canyon settled down and executed their offense with great guard play from sophomore Jasmine Sneed and several athletic moves from the long wiry 6-2 freshman Toni Oni in the paint to help pull away with the win. Senior Brenda Kramer Sierra Canyon lead all scorers with 18 San Diego's super freshman guard Tia Dixon finished with 10 points 6 assist. and 8 boards showing why she is one to watch.



Brenda Kramer 2009

**45-33 Sierra Canyon**

Mount Miguel HS. (Spring Valley CA.) 12-2 (Coach Robbie Sandoval) vs. Ayala HS. (Chino Hills CA.) 8-6 (Coach Mel Sims)



Denesia Williamson 2009

**GAME - III:** Mt. Miguel's 5-6 PG Denesia Williamson (University of San Diego Commit) opened the game stone cold and her shooting woes continued throughout the half with 8 points and only one (fg). Ayala found themselves down by 4 at the half (29-25) with early foul trouble, Top 50 National rated Jr. Rhema Gardner ( 6-2 WF) was called for 3 fouls early and had to sit all of the 2nd quarter along with 6-3 PF Freshman Jillian Alleyne with 3 fouls as well. Ariel Marsh 5-8 Combo Jr. from Ayala with excellent range and a great touch off the bounce held down the fort with several deep 3's and midrange jumpers. Danielle Miller, Mt. Miguel's athletic Soph. slashed to the cup with inside-out dribble drives and floaters to keep her squad ahead. The second half Mt. Miguel found themselves down by 15 with Gardner coming alive after sitting out with early foul trouble. The ultra athletic wing hit deep shots off the catch and bounce. Gardner found gaps in the defense and took it the rim and finished with her long wingspan (18 points). Senior Brianna Beridon (14 points) was the difference late with multiple rebounds and steals for Ayala. Jillian Alleyne finished helped her program win the big showdown with 14 points and 10 boards. **57-40 Ayala**



Ariel Marsh 2010

Bishop Gorman HS.(Las Vegas NV.) 12-3 (Coach Sheryl Kimpotich)

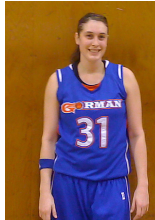
vs.

Eastlake HS. (Chula Vista CA.) 8-4 (Coach Janet Eleazar)



Aaryn Ellenberg 2010

**GAME – IV :** Eastlake stayed in the game early with athletic hustle plays and deep 3's. from (Howard University commit Cheyenne Curly-Payne with 7 of her 12 points & Jr. 2G Yvonte Neal 8 points. Bishop Gorman's do everything National ranked PG Aaryn Ellenberg took over with 12 pts in the first half with her silky smooth jumper and precision passing. Northwestern University recruit 6-4 Danielle Diamant



Danielle Diamant 2009

took it over from there dominating the paint with up & unders , jump hooks and mid range face ups showing off her great footwork. Diamant owned the boards with 10 in the 1<sup>st</sup> half. Early 2<sup>nd</sup> half Eastlake looked a little sluggish and shots fell short. Bishop Gorman took control mid 3<sup>rd</sup> and continued to pound it inside and stretch the defense when they doubled with several shots from the perimeter. Soph. WF Chelsie Pit did a great job attacking the basket once the defense of Eastlake rotated. BG stretched the game to 20 with the 2man game of PG Ellenberg (16 points) and Diamant 22 points.. **59-37 Bishop Gorman**



Chelsie Pit 2011

Our Lady of Peace HS. (San Diego CA.) 14-2 (Coach Norm Guay) vs. Laguna Hills HS. (Laguna Hills CA.) 14-3 (Coach Mel Sims)



Lauren Engeln 2010 - Laguna Hills  
Ashley Guay 2011 - Our Lady of Peace

**GAME - V:** Laguna Hills 5-10 Soph. PF Jenna Arnett & Freshman Forward Celia Marfone set the ton early with solid defense and strong boards. Ashley Guay sophomore PG (OLP) fought hard taking the ball to the rim and defending with her in your face style (D). OLP found it tuff in the paint with several shoots getting rejected. The first half was the Lauren Engeln show, the very skilled 5-11 2G lead with 12 of her teams 14 points and 4 of her teams 6 blocked shots. 2<sup>nd</sup> half OLP battled back with Amanda Shayota getting physical down low with 8 pts in the 3<sup>rd</sup> in a toe to toe battle with Celia Marfone of Laguna Hills who had 6 pts in the quarter. LH took the lead 28 -26 to start the 4<sup>th</sup>. National recruit Lauren Engeln imposed her will on the game in the 4<sup>th</sup> and helped LH pull away with the victory. Engeln lead all scores with 23 pts 9 rebs. and 5 block shots.

**45-36 Laguna Hills**